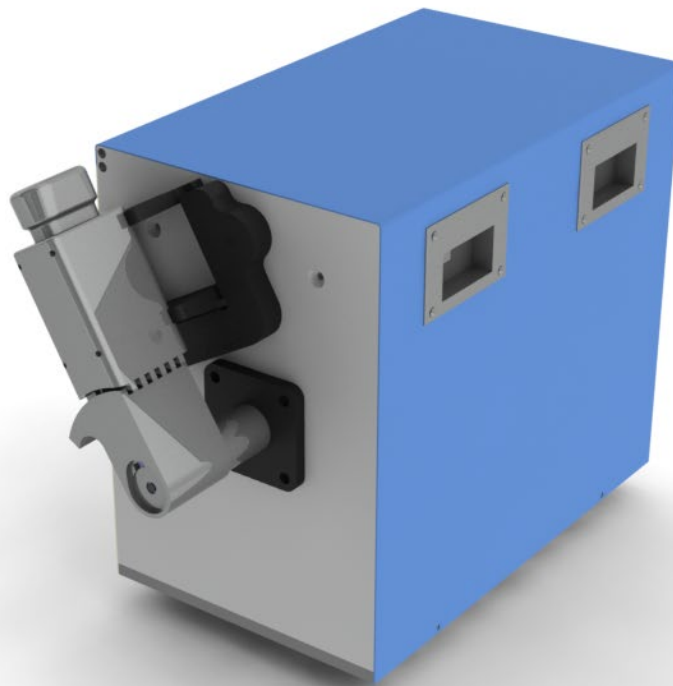




BONE GRINDER

Model No. BG-01

OPERATING MANUAL



© 2016 Biorep Technologies, Inc.



IMPORTANT SAFETY INSTRUCTIONS

CAUTION: PLEASE READ AND OBSERVE ALL WARNINGS AND INSTRUCTIONS GIVEN IN THIS OWNER'S MANUAL AND THOSE MARKED ON THE UNIT. RETAIN THIS BOOKLET FOR FUTURE REFERENCE.

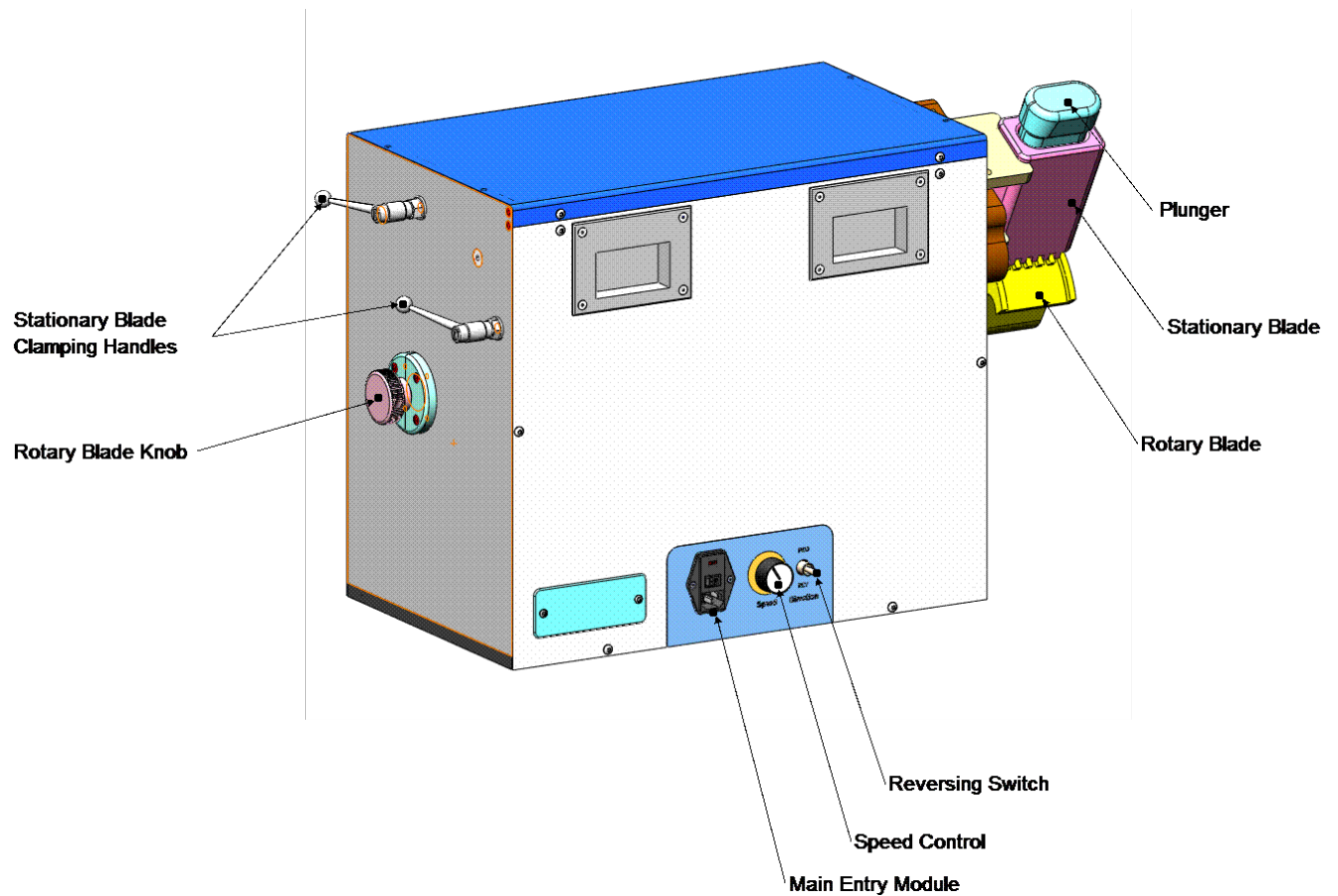
DO NOT REMOVE THE CABINET COVER, OR YOU MAY BE EXPOSED TO DANGEROUS VOLTAGE. REFER SERVICING TO QUALIFIED PERSONNEL ONLY.

1. Read and follow these instructions.
2. Keep these instructions.
3. Heed all warnings.
4. Do not block any ventilation openings. Install in accordance with the manufacturer's instructions.
5. Do not defeat the safety purpose of the polarized or grounding-type plug.
6. A polarized plug has two blades with one wider than the other. A grounding-type plug has two blades and a third grounding prong, which is provided for your safety. If the provided plug does not fit into your outlet, consult an electrician for replacement of the obsolete outlet.
7. Protect the power cord from being walked on or pinched particularly at plugs convenience receptacles, and the point where it exit from the apparatus.
8. Keep your fingers well clear of all moving parts. Neglecting to do so may cause personal injury.
9. Refer all servicing to qualified personnel. Servicing is required when the apparatus has been damaged in any way, such as power-supply cord or plug is damaged, liquid has been spilled or objects have fallen into the apparatus, the apparatus has been exposed to rain or moisture, does not operate normally, or has been dropped.

Introduction

The Bone Marrow Machine is used to cut bone (vertebral bodies - VB) into small pieces. In order to release the bone marrow, bones are fed into the stationary blade and the rotary blade grinds the larger pieces into smaller particles.

Identification of Machine Parts





Specifications

MODEL NO: BG-01
POWER SOURCE: 115 VAC.
FUSE: 5 Amps

Controls

Power Entry Module: The Power Entry Module has the Main Switch which turns on and off the machine. When this switch is turned on, the Rotary Blade works in the forward direction.

Reversing Switch: The Reversing Switch is used to invert the direction of the Rotary Blade. It will change the direction of the moving blade if it becomes necessary.

Speed Control: The Speed Control knob controls the speed of the Rotary Blade from zero to approximately 30 cycles per minute.

The Plunger

The function of the Plunger is to press the bone into the Stationary Blade compartment.

Instructions for Removing and Mounting Blades

During normal operation, both the Stationary Blade and the Rotational Blade may need to be adjusted. The blades can also be completely removed for cleaning purposes.

To Remove the Blades:

1. Loosen the Stationary Blade Clamping Handles and slide the Stationary Blade up.
2. Loosen the Rotary Blade Knob and pull the Rotary Blade away from the machine.

To Mount the Blades:

1. Slide the Rotary Blade onto the shaft.

Do not tighten the Rotary Blade Knob yet.



2. Slide the Stationary Blade (without the plunger) into place and align the blade with the teeth on the Rotary Blade. (To align the teeth, adjust the distance of the Rotary Blade from the machine.)
3. Tighten both of the Stationary Blade Clamping Handles.
4. Tighten the Rotary Blade Knob.

Troubleshooting

If you encounter any problems, please do not hesitate to contact us at:

Biorep® Technologies, Inc.

15804 NW 57th Ave
Miami Lakes, FL 33014

Tel: 305-330-4449

Fax: 305-330-4402

E-mail: info@biorep.com

Website: www.biorep.com