

Perfusion Tray

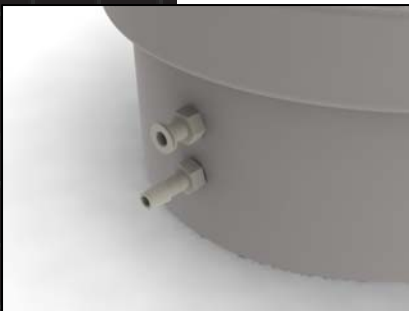
Model No. PERTRAY-01



**Stainless steel
Perfusion Tray**



**Perfusion Tray
setup**



**Drain and
Thermoprobe
ports**



The Perfusion Tray was designed to use in conjunction with the Perfusion Apparatus and it is available in disposable and autoclavable versions.

The autoclavable Perfusion Tray material is stainless steel and the disposable tray material is ABS. The disposable Perfusion Tray is individually packed and sterilized.

The inside of the tray is funnel-shaped so that its content can be drained through the tray's bottom port. The port directly above the drain is used to monitor the enzyme temperature using the Biorep Thermoprobe.

At the opposite end of the tray there are two ports to recirculate cold water or anti-freeze to keep the enzyme cold.

■ Specifications

	PERTRAY-SS-01	PERTRAY-MABS-01
Tray material	Stainless steel	ABS
Cooler port material		Nylon
Thermoprobe port material		
Drain port material		
Autoclavable	Yes	No
Pressure Rating	200 mmHg (3.9 psi)	100 mmHg (1.9 psi)
Packed sterile	No	Yes (Gamma radiated)
Dimensions	W x D x H: 26.4 cm x 16.8 cm x 4.6 cm (10.4" x 6.6" x 1.8")	W x D x H: 28.2 cm x 19.1 cm x 7.6 cm (11.1" x 7.5" x 3.0")
Volume capacity	515 mL	600 mL
Weight	1634.5 g (3.6 lbs)	698 g (1.54 lbs)
Max operating temperature	210 °C (410 °F)	60 °C (140 °F)
Drain port size	ID x OD: 4.39 mm x 5.16 mm (0.173" x 0.203")	ID x OD: 2.97 mm x 4.90 mm (0.117" x 0.193")
Cooler port size	ID x OD: 5.72 mm x 7.94 mm (0.225" x 0.313")	ID x OD: 4.9 mm x 7.6 mm (0.194" x 0.300")
Required Accessories	Biorep® Thermoprobe, Perfusion Tubing Set	